

ULTRASONIC CLEANER SKYMEN MANUFACTURE

Professional manufacturer focus on ultrasonic technology R&D

Instruction Manual

- ☐ MECHANICAL MODEL
with knob timer and heater
- ☐ POWER ADJUSTABLE MODEL
with timer and heater,and adjustable power

Application:
Electronic factory, utensil, hardware, machinery, communication, biological, medical instrument, glasses,Optical, Jewelry, clock, watch, chemical, Textile, auto part, Ships, aviation, mining area, commercial cleaning.

PREFACE OF USE

Thank you for purchasing our company's products, this manual is mainly to explain some necessary precautions during installation and use. Before the operation. Please read this manual first, in order to fully understand the operating procedures of this product, please keep the manual for reference anytime. Before connecting the power, please confirm whether it is within the rated range. Do not modify this product. Please note that The machine control panel will be affected by organic solvents, strong acid, strong alkali erosion .This product may cause some interference to some electromagnetic communication devices, such as mobile phones, Bluetooth, etc. When installing ,pls place it horizontally, do not cut diagonally, to prevent liquid from flowing out

THE BASIC PRINCIPLE OF ULTRASONIC CLEANING

The cleaner uses ultrasonic energy (40 kHz) in the form of sound waves to create millions of tiny microscopic bubbles in the solution that even works its way into holes and hidden cavities, loosening dirt on all surfaces that the solution touches. This action called cavitation, occurs thousands of times per second to gently yet thoroughly scrub contamination off the article being cleaned. When you lift the item out of the cleaner, it's microscopically clean.

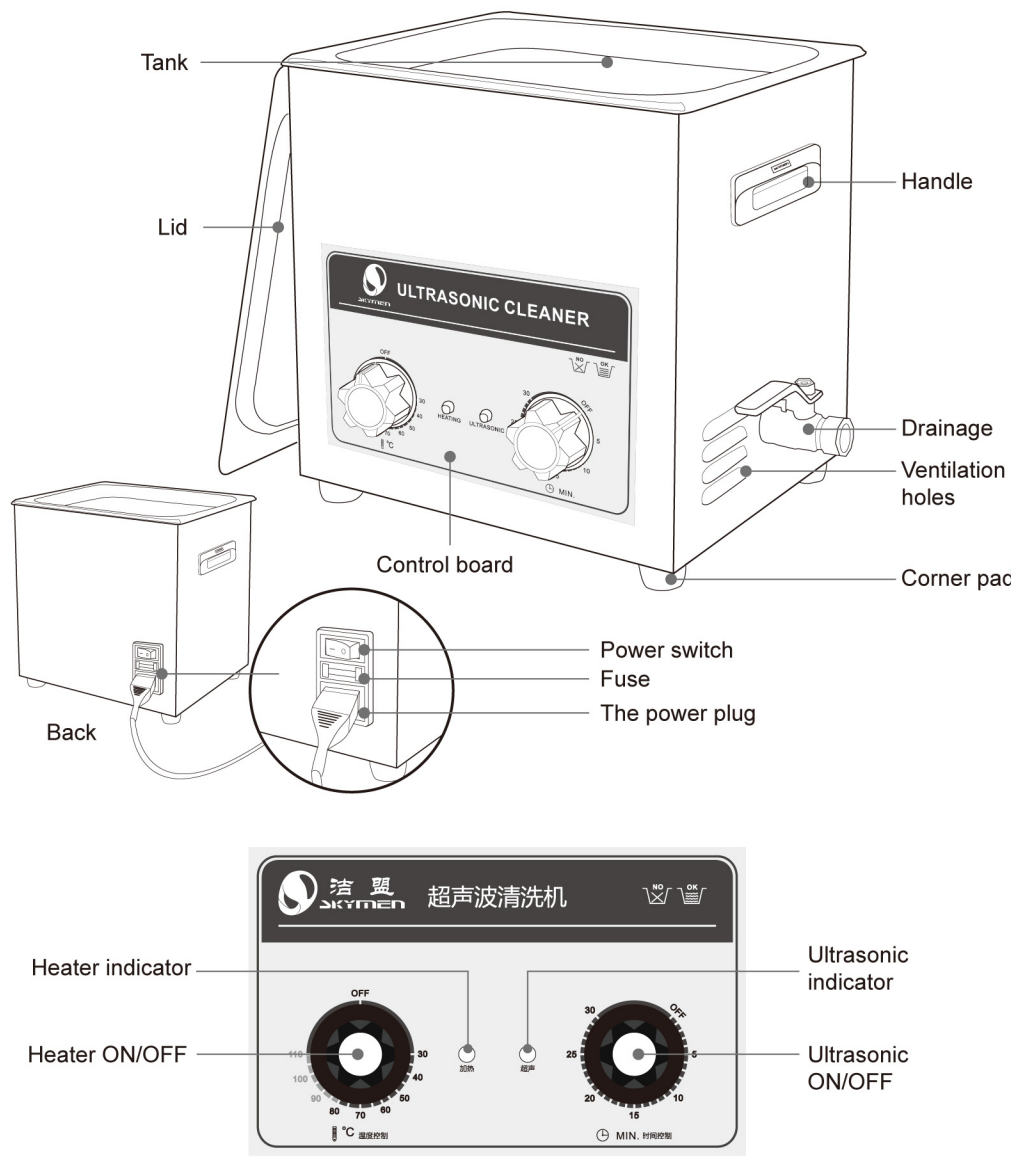
NOTES BEFORE USE

- 1 . Ensure the power supply is in rated range before power cable is connected Refitting is strictly prohibited! Attention that the control panel will be eroded by organic solution,strong acid and strong alkali.
- 2 . Ensure the earth wiring is well connected before starting.
- 3 . Ensure the power key or knob is on the "OFF" place before starting.
- 4 . Do not operate if the tank is empty or ultrasonic generator will be damaged.If heating is needed,the water level shouldn't be less than2/3.
- 6 . Please close the lid to reduce noise and pay attention to water and steam in case of burning skin while open the lid.
- 7 . Do not relocate the machine when fluid in the tank in case of overflow.
- 8 . Please choose the proper sizes or types of baskets according to the object to be cleaned
- 9 . Suggest using water-soluble liquid for benchtop ultrasonic cleaners. Strong acid or flammability cleaner is forbidden.Donot heat when using flammable liquid such as alcohol, gasoline, etc., heating is strictly prohibited , ultrasonic vibration for a long time cause temperature of liquid increase, caution fire!
- 10 . Do not use the machine in severe environment :

The place where temperature changes fiercely; The place where humidity is too high and is easy to produce dew; The place where vibration or impact is strong; The place where exists corrosive gas or dust; The place where water, oil or chemicals splash; The place where is filled with explosive and flammable gas;

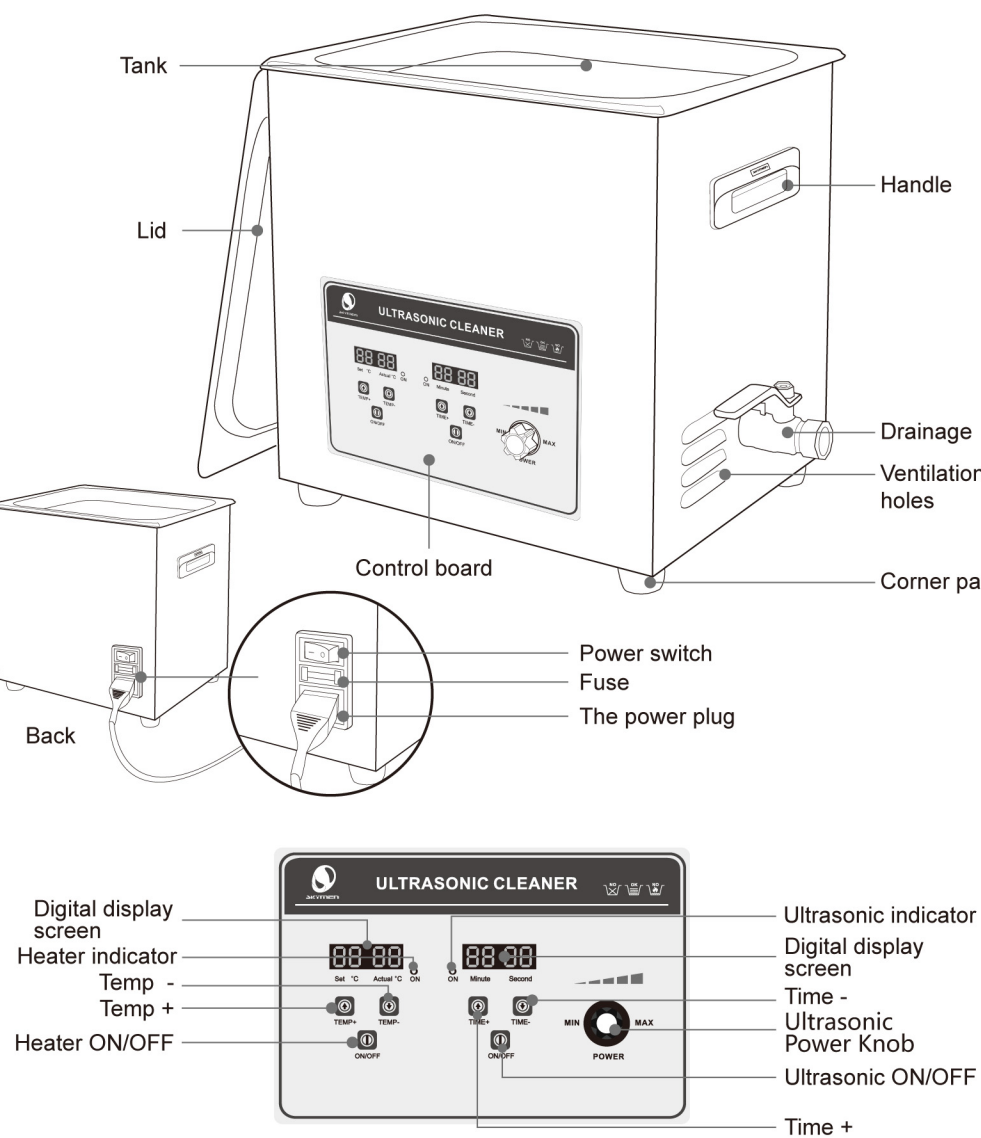
PRODUCT DRAWING&INDICATION

MECHANICAL MODEL



02

POWER ADJUSTABLE MODEL



03

OPERATION STEPS

◆ Before Operating Your Cleaner

1. add cleaning liquid
Fill the tank with warm or tap water below the maxline;Add required quantity of cleaning solution.When using flammable liquid such as alcohol, gasoline and so on, heating is strictly forbidden!ultrasonic vibration for a long time cause temperature of liquid increase, caution fire!
2. open power
Plug the cleaner into a grounded outlet. Turn on the power switch at the tank back, then machine is power on.("O" is closed, and "I" is open)

◆ Start ultrasonic cleaning

- MECHANICAL MODEL
Start(ULTRASONIC), clockwise rotate to choose the time you required between 0-30 min. When the indicator light is on and make "ZIZI" sound,it shows ultrasonic operation work OK.
- POWER ADJUSTABLE MODEL
the time is random display for primary starting. Touch TIME+ once to increase time by 1 minute; Touch TIME- once to decrease time by 1 minute. Touch ON/OFF switch after set the time, ultrasonic indicator turns red and machine starts working. Timer will count down and stop work when time shows "00:00". Timer display shows the previous setting time when next operation

◆ Heat

- MECHANICAL MODEL
If need heating, start(HEATING) to adjust required temperature, normally 40-60°C is the best. (Heating is optional upon needs)
- POWER ADJUSTABLE MODEL
The setting temperature is random display for primary starting and Actual is rom temp. Touch TEMP+ once to increase temperature by 1 °C; Touch TEMP- once to decrease temperature by 1 °C. Temperature display shows setting temperature and actual temperature when heater is working, the heater indicator goes off when actual temperature reaches setting temperature.

◆ Adjusting power

The function is only available for power adjustable models! Rotate SLOWLY the power knob clock-wise to increase the power from 40% to 100% and counter-clockwise SLOWLY is to decrease sonic power.

◆ Power OFF

MECHANICAL MODELS

Turn the timer button to the location of "OFF", the ultrasonic stops and the light is off. Turn the heating button to the location of "OFF", the heating stops and the light is off.

DIGITAL MODELS

Press "ON/OFF" to stop working and then cut off the power. empty out the liquid, clean the tank and the unit with cloth for next use.

APPLICATION

Full series standard ultrasonic cleaners are made up of high quality stainless steel plate, which is corrosion resistance and long lifespan, adopt with original South Korea ultrasonic transducer and advanced adhesive technology, high electro-acoustic conversion efficiency and strong ultrasonic power output. Equipped with automatic constant temperature heating device, heating range: room temperature-80°C
Skyrmen ultrasonic cleaner widely applied to industry of precision electronics, painting, filter system, watch-clocks, glass, metal, jewelry, and medical instruments deaning etc.

Industry	The cleaning products materials	Cleardirt
Semi-conductor	Integrated circuit, power tube, silicon wafer, diode, lead frame, capillary, tray, etc	Hard, etching oil stamping oil, polishing wax, dust particles,etc
Electrical& electronic machine	Tube parts, cathode ray tube, printed circuit board, quartz parts, electronic components, telephone switching equipment, speaker components, power meter, LCD glass, core iron parts, computer floppy disk, vido parts, hoop parts, head, photo die mask,etc	Fingerprint powder, cutting oil, stamping oil, iron filings, polishing materials, wanut powder, polishing wax, resin, dust etc
Precision machine	Bearing, sewing machine parts, typewriter, textile machine, optical mechanical device, gas valve, watches, cameras, metal filter element,etc.	Machine cutting oil, iron filings, polishing powder, finger print oil, grease, dirt etc.
Optical device	Glasses, lens prism, optical lens, filter lens, glass device, film, optical fiber, etc.	Plastic, resin, paraffin, finger printing, etc
Hardware & machinery parts	Bearing, gear,ball, metal shaft parts, tools, adjustable valve, and cylinder parts, burner, copm pressors,hydraulic press, gun and ultracentrifuge, city water faucet, etc.	Cutting oil, iron filings,grease polishing powder, finger printing, and so on.
Medical instrument	Medical instrument, denture, etc.	Iron filings, polishing powder, oil, stamping oil, dirt, etc.
Electroplate	Galvanized parts,mold, stamping parts, etc.	Polishing scrap iron,oil,black iron shell, rust, oxidation shell, scrap iron, polishing powder, stamping oil,dirt etc.
Car parts	Poston ring,carburetor,flow meter housing,compressor shell,electrical components,etc	Iron filings, polishing powder,oil, stamping oil,dirt,etc
Chemical fiber	Chemical or artificial fiber nozzle filter protector,chemical fiber texture,etc	Chemical colloid,glue and other solid material,dust,etc

05

MAINTENANCE

◆ Maintenance

Regularly use high-pressure wind blown away dust for electrical parts Clean the tank at least once a week

◆ Troubleshooting

No	Problems	Possible causes	Solutions	Remarks
1	No Ultrasonic	A.Power supply not connect B.Fuse broken C.Cable short circuit D.Transducer short circuit E.PCB Board broken F.Other reasons	A.Check and plug power switch B.Check the fitted power supply and change the same specification fuse C.Connect fitted cable or replace a new D.Inquiry our after service engineer E.Check the broken part and change it F.Inquiry our after service engineer	
2	Time control failure	A.Timer failure B.other reasons	A.Replace timer or digital control panel B.Inquiry our after service engineer	
3	No heating	A.Heater power switch bad linkage B.Fuse burn out C.Heating pad burn out D.Digital display board out of control E.Other reasons	A.Check heating plug and connect well,check outlet line with multimeter,if OK and resistance value is few hundred OHMs. B.Change the same specification fuse C.Replace the bad heating pad if open circuit D.Check the broken part and change it E.Inquiry our after service engineer	Suggestion 50-60°C
4	Temperature control failure	A.Thermostant loosen B.Thermostat tube broken C.Digital display out of control D.Other reasons	A.Fasten the thermostad header. B.Replace thermostat. C.Check the broken part and change it. D.Inquiry our after service engineer	
5	Not well cleaning	A.too high too low liquid surface B.too high too low temperature C.Not suitable cleaning liquid D.Other reasons	A.Adjust liquid into the best surface B.Adjust temperature into the most fitted C.Stop and switch off power supply,replace suitable liquid after the previous liquid cool down D.Inquiry our after service engineer	Suggestion 50-60°C
6	Electrolckage	A.Customer side not grounded B.Machine not grounded	A.To ensure grounded B.Check if machine earth wire loosen	
7	Scrap	Not repairable or discarded	According to the state related laws and designated units for discarded medical equipment	
8	Other problems		Consult our after service: 0755-297847256	

NOTICE			
Strictly prohibit dry burning	Combustible liquids are strictly prohibited	Please use the ground line correctly	Please do not throw pollution at random

06

MAINTENANCE CARD

Ultrasonic cleaner

EX factory date:

Machine number:

Work voltage

Work current

Rated power

Maintenance care records

	Maintenance care solution	replacement part	contact person
01			
02			
03			
04			
05			
06			
07			
08			
09			
10			
11			
12			

Please contact supplier if trouble cannot be removed !

08

>>>>>DITIGAL MODEL<<<<<<

Model	Frequency (kHz)	Transducer (PCS)	Capacity (L)	Tank size(mm)	Unit size(mm)	Heating power (W)	Ultrasonic power (W)	Time(M)	Temperature(°C)
JP-010	40	1	2	150x135x100	175x160x210	100	80	0-30	20-80
JP-020	40	2	3	240x135x100	265x165x220	100	120	0-30	20-80
JP-030	40	3	3.2	300x150x100	325x180x225	200	180	0-30	20-80
JP-031	40	3	4.5	300x150x150	325x180x280	200	180	0-30	20-80
JP-040	40	4	10	300x240x150	325x265x280	200	240	0-30	20-80
JP-060	40	6	15	330x300x150	360x325x285	300	360	0-30	20-80
JP-080	40	8	22	500x300x150	530x325x285	500	480	0-30	20-80
JP-100	40	10	33	500x300x200	530x325x325	500	600	0-30	20-80

>>>>>POWER ADJUSTABLE MODEL<<<<<<

Model	Frequency (kHz)	Transducer (PCS)	Capacity (L)	Tank size(mm)	Unit size(mm)	Heating power (W)	Ultrasonic power (W)	Time(M)	Temperature(°C)
JP-040ST	40	4	10	300x240x150	325x265x280	200	96-240	0-30	20-80
JP-060ST	40	6	15	330x300x150	360x325x285	300	150-360	0-30	20-80
JP-080ST	40	8	22	500x300x150	530x325x285	500	192-480	0-30	20-80
JP-100ST	40	10	30	500x300x200	530x325x325	500	240-600	0-30	20-80
JP-120ST	40	12	38	500x300x250	675x475x655	1500	240-600	0-99	20-80
JP-180ST	40	18	53	500x350x300	675x475x735	1500	360-900	0-99	20-80

07